

## Monitor - ISSN 1472-0221

The Newsletter for PC-Based Data Acquisition and Control  
Issue 208, December 2015

Welcome to Monitor, the data acquisition and control newsletter. Our best wishes for a happy and prosperous New Year to you.

I hope you find the newsletter useful, but should you wish to remove yourself from our mailing list, go to

[http://www.windmillsoft.com/daqshop/Monitor\\_Newsletter.html](http://www.windmillsoft.com/daqshop/Monitor_Newsletter.html)

You can download Monitor as a pdf file from

<http://www.windmill.co.uk/monitor/monitor208.pdf>.



## Contents

- \* [Windmill Questions: How to start the Windmill Chart Program?](#)
- \* [DAQ News Round-up](#)
- \* [Data Acquisition Exhibitions](#)

## How to start the Windmill Chart Program?

### Question

The start button is not clickable on the Chart window. Why not?!



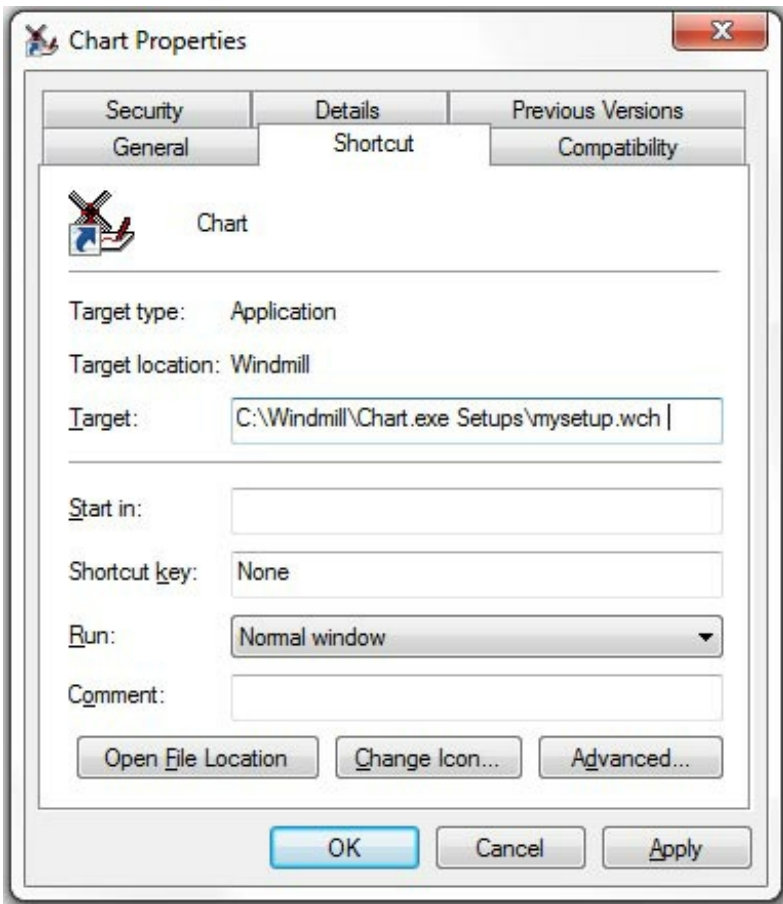
### Answer

Before you can chart data you need to choose which hardware configuration you want to use. From Chart's File menu select Load Hardware Setup. Now select the data channels you want to chart. The Start button is enabled and off you go.

You can save your Chart settings and automatically load these the next time you run Chart, so Chart will be ready to start. To do this:

- On the Windows desktop right-click the Chart icon.
- Select Properties and choose the Shortcut tab.

- Add the setup file name to the Target box.  
For example, for an Chart setup file called mysetup.wch, the target might look like this  
"C:\Windmill\Chart.exe" Setups\mysetup.wch



For full details of using Chart select "Help" in the Chart window. Chart is included in the Windmill trial available from <http://www.windmill.co.uk/jsarrpsr.htm>

## DAQ News Round-up

Welcome to our round-up of the data acquisition and control news. If you would like to receive more timely DAQ news updates then follow us on [Twitter](#) - [@DataAcquisition](#) - or grab our [rss feed](#).

### Tagging seals improves ocean weather forecasts

Data from animal-borne sensors, including seal tags, improves global ocean forecasts by between 1 and 6%.

Source: SCUBA News

<http://news.scubatravel.co.uk/>



### **Sensor chip pulls power out of the air so it never needs to be charged**

Researchers have created the world's smallest temperature sensor chip. It is able to draw power from radio waves being broadcast by the same wireless network it uses to communicate. As a result, the chip doesn't need a battery and never needs to be charged

Source: University of Technology, Eindhoven

<https://www.tue.nl/>

### **Wireless sensors could make diesel engines greener**

Sensors measure soot and ash buildup in filters to help engines burn more efficiently.

Source: MIT News

<http://news.mit.edu/>

### **Real-time tracking shows how batteries degrade**

3D imaging used to track the degradation of disposable lithium batteries during normal use in real-time.

Source: NPL

<http://www.npl.co.uk/>

### **Sensor detects toxins leaching from plastic**

Engineers have developed a highly sensitive device able to detect synthetic compounds that leach from plastic food packaging into the contained food or beverage.

Source: NPL

<http://www.massey.ac.nz/>

---

## **Data Acquisition Exhibitions and Conferences**

The quarterly update of data acquisition and control exhibitions around the world.

### **Electrotest Japan**

13-15 January 2016

Tokyo Japan

Exhibition specialising in test, inspection and measurement for electronics manufacturing and R and D.

<http://www.nepconjapan.jp/>

### **Metrommeet**

24-26 February 2016

Bilbao Spain

Conference on industrial dimensional metrology.

<http://metrommeet.org/en/>

### **AUTOMATICON**

1-4 March 2016

Warsaw Poland

Trade fair for automation, control, measurement and robotics.

<http://www.automaticon.pl/en/>

### **Pittcon**

6-10 March 2016

Atlanta USA

The world's largest conference and exposition on laboratory science.

<http://pittcon.org/>

### **DATE**

14-18 March 2016

Dresden Germany

Electronic systems design, automation and test conference and exhibition. From system-level hardware and software implementation to integrated circuit design.

<http://www.date-conference.com/>

### **ArabLab**

20-23 March 2016

Dubai UAE

The largest annual trade show in the world for laboratory science and instrumentation.

<http://www.arablab.com/>

### **FORUMESURE**

21-23 March 2016

Dakar Senegal

Exhibition on quality, measurement, accreditation and instrumentation.

<http://www.forumasure.com/en>

### **Eurolab**

12-14 April 2016

Warsaw Poland

Trade show dedicated to the laboratory industry.

<http://www.targieurolab.pl/>

---

\* Copyright Windmill Software Ltd

\* Reprinting permitted with this notice included

\* For more articles see <http://www.windmill.co.uk/>

We are happy for you to copy and distribute this newsletter, and use extracts from it on your own web site or other publication, providing the above notice is included and a link back to our website is in place.

For previous issues by subject see

<http://www.windmill.co.uk/monitorindex.html>

### **DOWNLOAD DATA ACQUISITION SOFTWARE**

As a thank you for subscribing we offer you the ComDebug data logging and Com port trouble-shooting software. Log data over RS232, RS422, RS485 or Modbus. Also included is a month's trial of the Windmill 7 logging, charting and control programs. To download go to

<http://www.windmill.co.uk/jsarpsrr.htm>

### **SUBSCRIBING OR CANCELLING SUBSCRIPTION Visit**

<http://www.windmill.co.uk/newsletter.html> and add or remove your e-mail address.

Windmill Software Ltd, PO Box 58, North District Office,  
Manchester, M8 8QR, UK

Telephone: +44 (0)161 833 2782

Facsimile: +44 (0)161 833 2190

E-mail: [monitor@windmillsoft.com](mailto:monitor@windmillsoft.com)

<http://www.windmill.co.uk/>

<http://www.windmillsoft.com/>

[Google+](#)